

## WPANT10032

### Wi-Fi Embedded Antenna



### Application

Ideal for applications where the antenna needs to be off-board and still perform very efficiently.

We can assist your engineers to optimize mounting positions for these antennas in your specific application and can further assist to trouble shoot system integration issues such as TRP/TIS and FCC requirements. We specialize in developing customized Antenna solutions. Please contact [sales@worldproducts.com](mailto:sales@worldproducts.com) with your specific application requirements.

### Electrical Properties

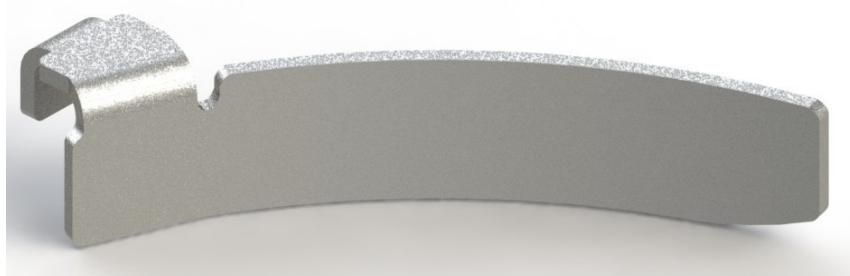
<b>Operating Frequency</b>	2.4 – 2.5 GHz
<b>Approximate Antenna Impedance [<math>\Omega</math>]</b>	50 $\Omega$
<b>VSWR (Typical)*</b>	< 2:1
<b>Peak Gain [dBi] (Typical)*</b>	2.5 dBi
<b>Efficiency [%] (Typical)*</b>	70 %
<b>Polarization</b>	Linear
<b>Pattern</b>	Near Omni-directional
<b>Minimum Ground Plane Size Required</b>	40 – 50 mm

\*Note: These performance metrics were recorded with the Antenna installed on a client's device.

### Mechanical / Environmental Properties

<b>Antenna Dimensions</b>	0.71" x 0.12" x 0.015" (18mm x 3mm x 0.38mm)
<b>Antenna Color</b>	Metallic silver
<b>Operating / Storage Temperature</b>	-40°C to +300°C
<b>Environmental</b>	Meets standards for UL 94V-0
<b>Hazardous Materials</b>	RoHS Compliant

Picture



VSWR

